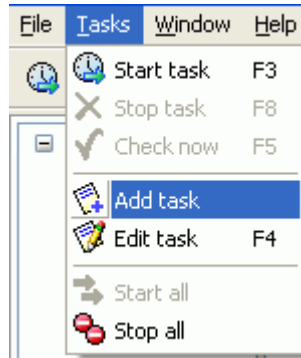


# Network File Monitor Professional One-to-One synchronization over LAN (sample task)

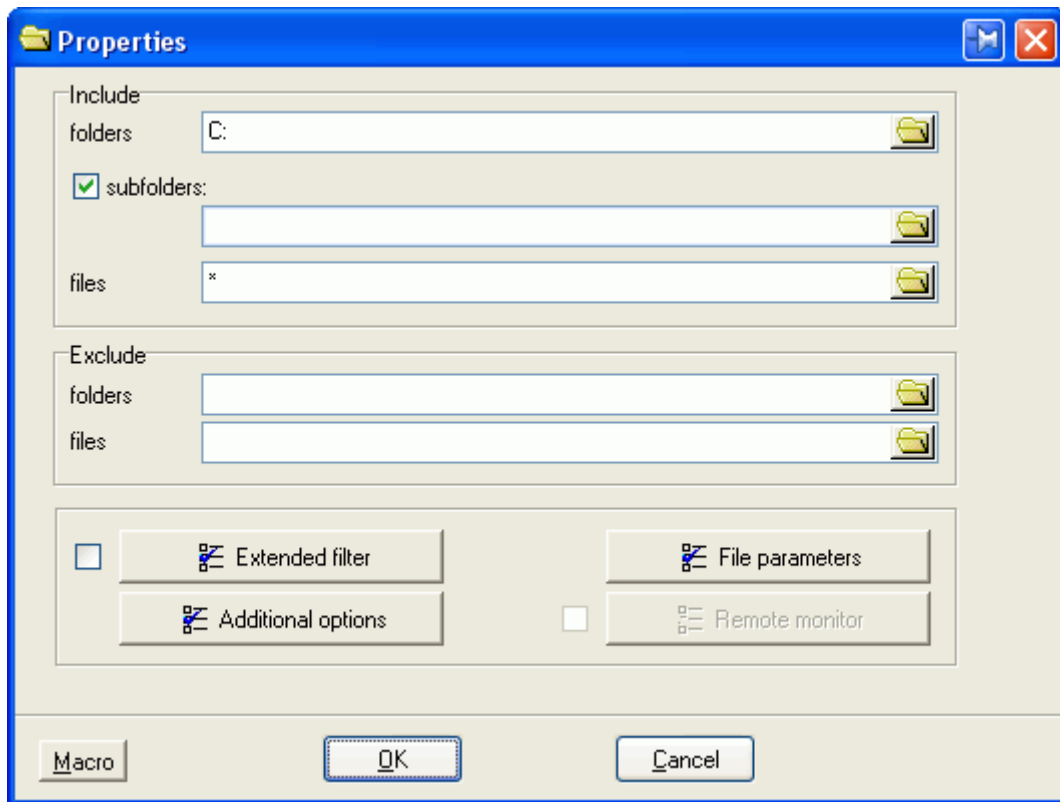
1. Make a new task.



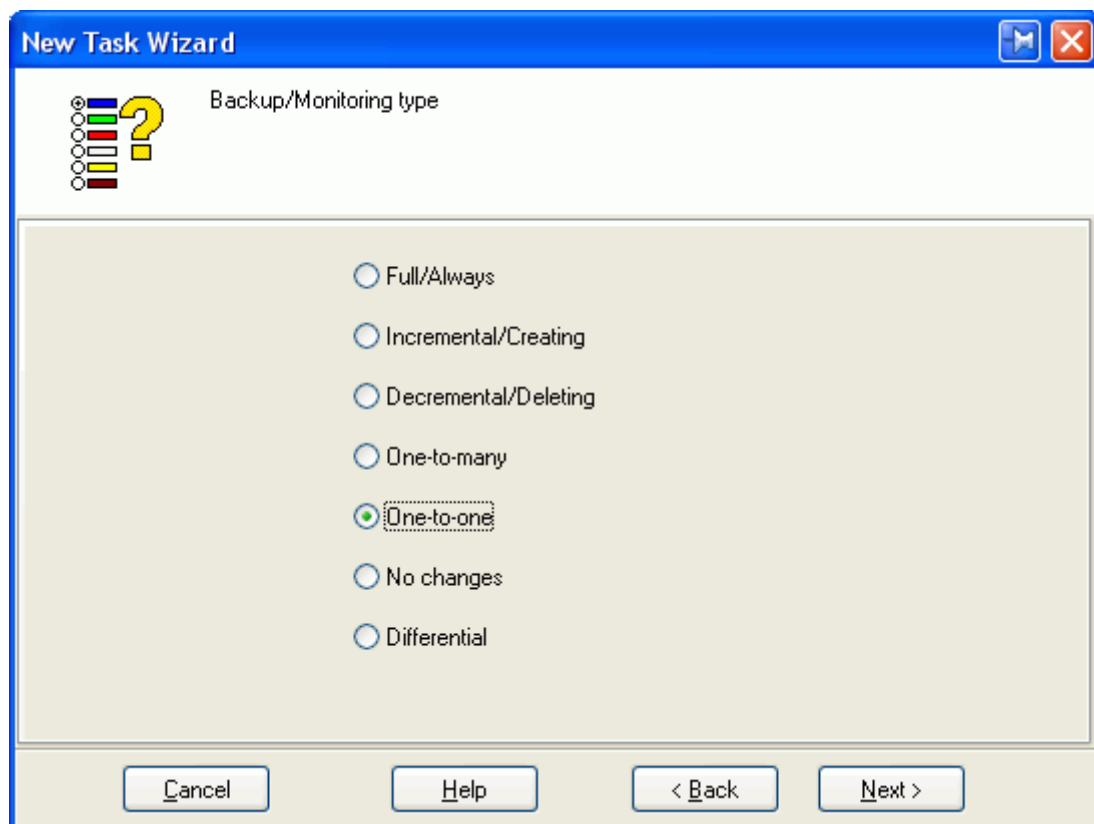
2. Select a **Folder** item in the Wizard window and press **Next** button.



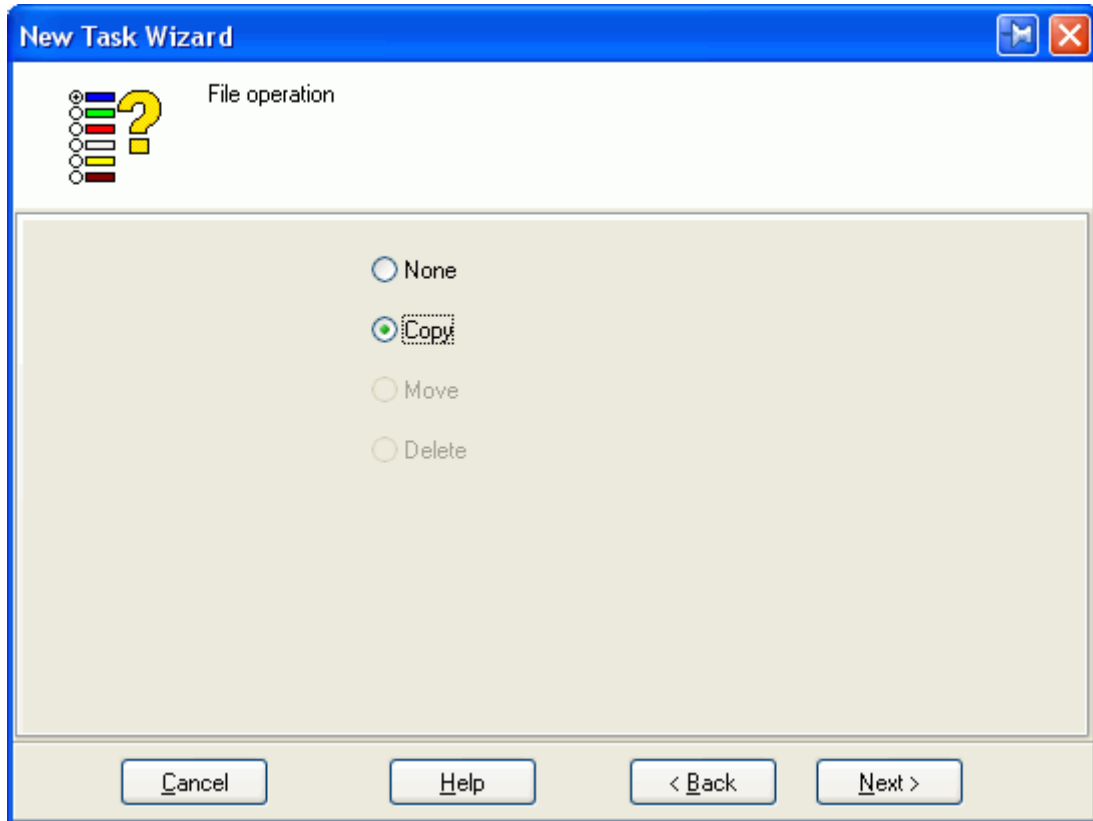
3. Enter a disk drive letter to be synchronized and press **OK** button.



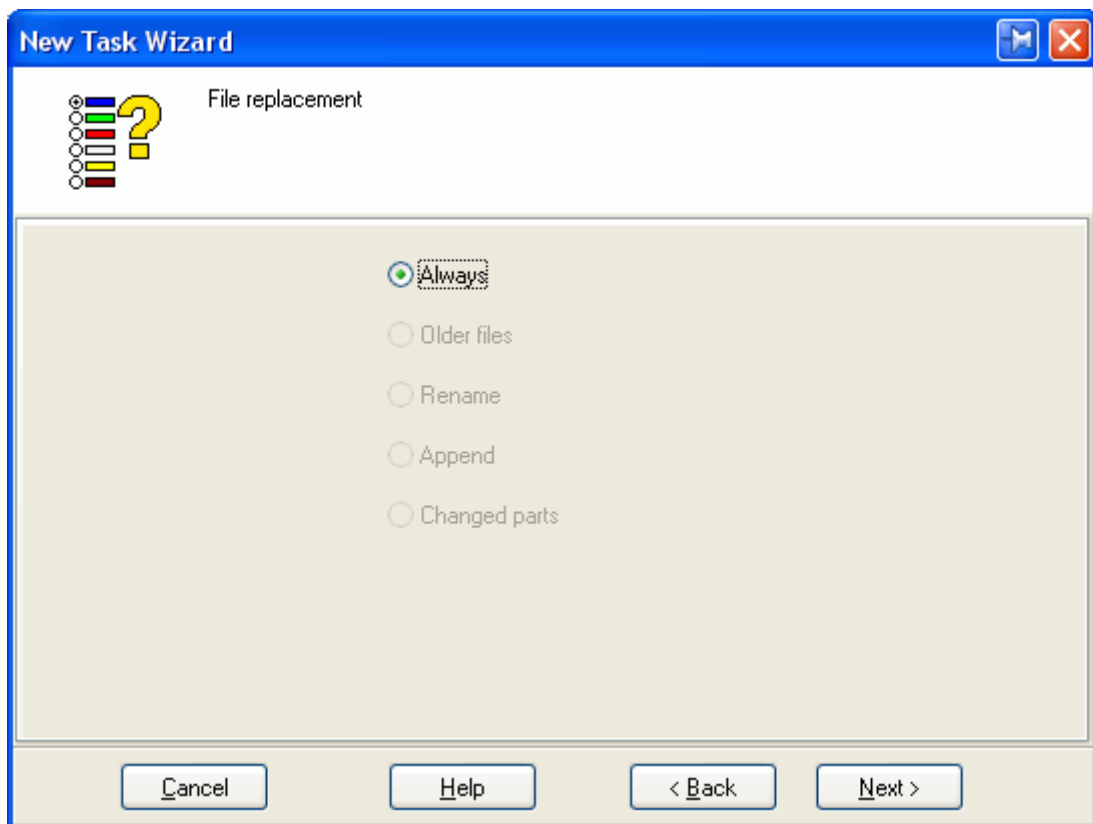
4. Select **One-to-one** backup type and press **Next** button.



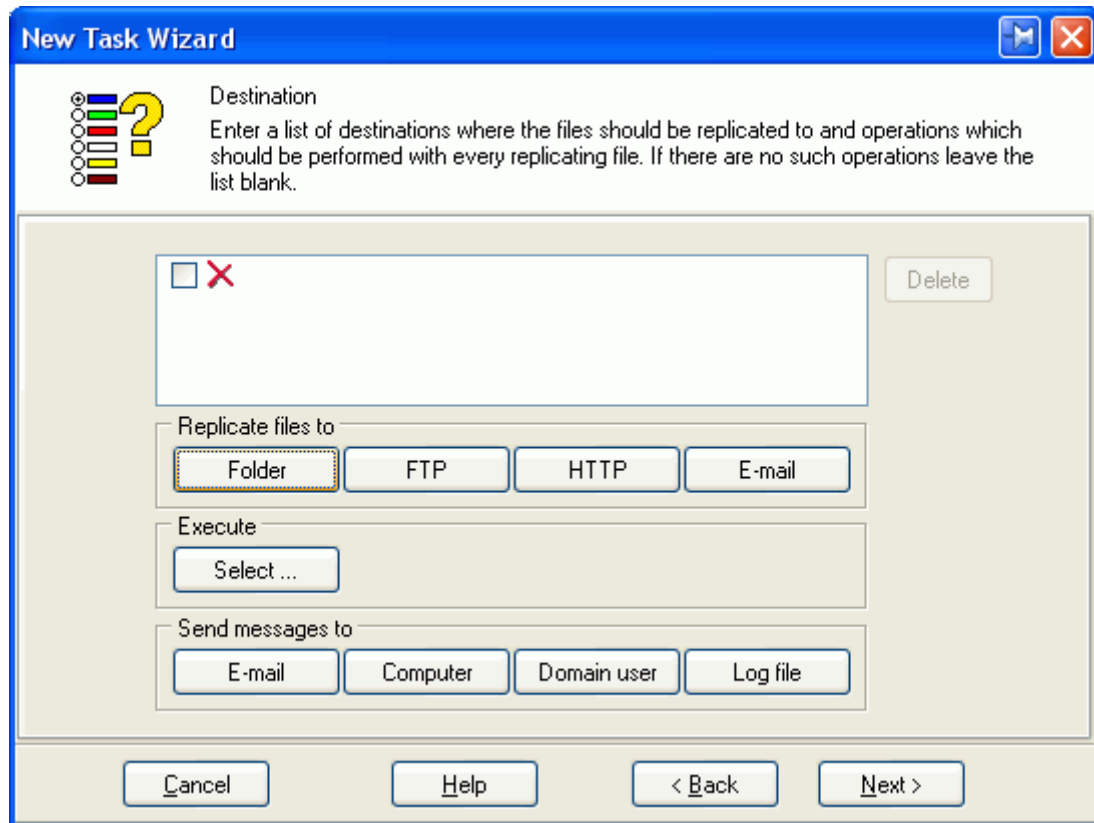
5. Select **Copy** file operation and press **Next** button



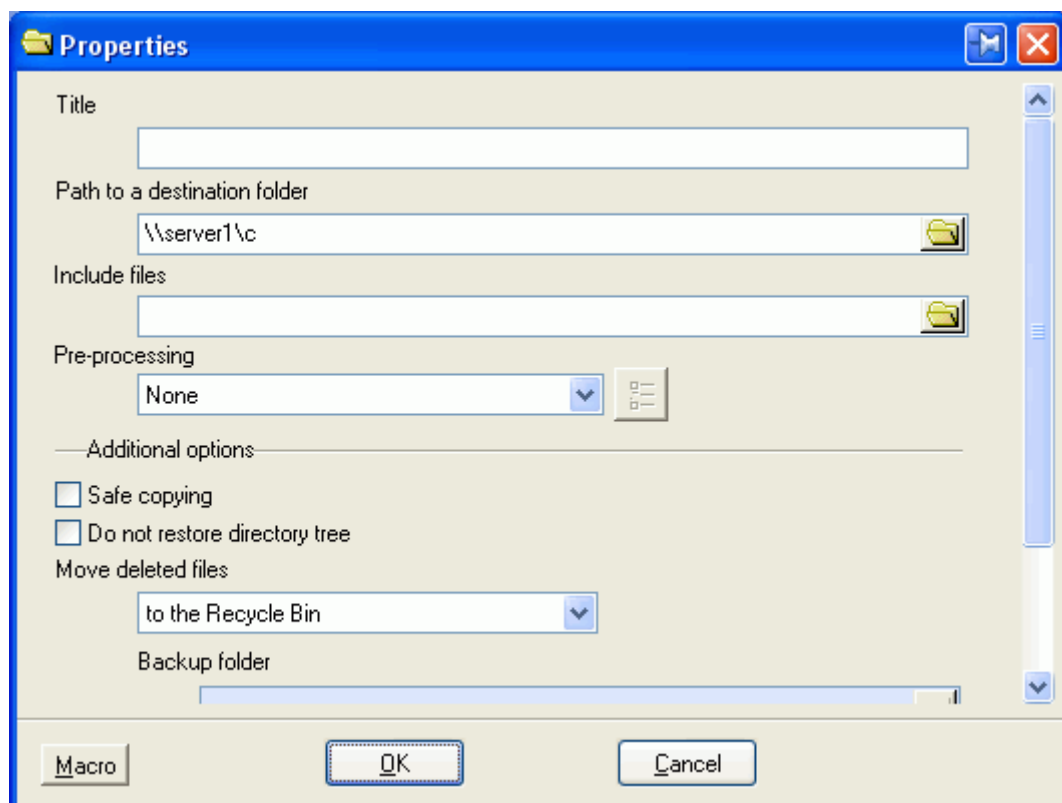
6. Select **Always** as a file replacement type and press **Next** button.



7. Press **Folder** button in the destination Wizard window.



8. Enter a path to the folder where the files should be replicated to.



9. Select **Periodical** request in the Schedule type Wizard window and press **Next** button.



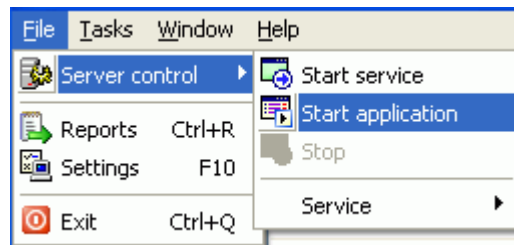
10. Select a time interval between scans for new / changed files and press **Next** button.



11. Enter the appropriate task name and press **Finish** button.



12. Start the server module.



13. Start the task.

