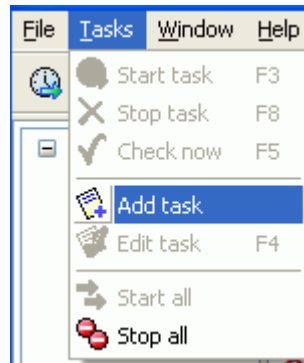


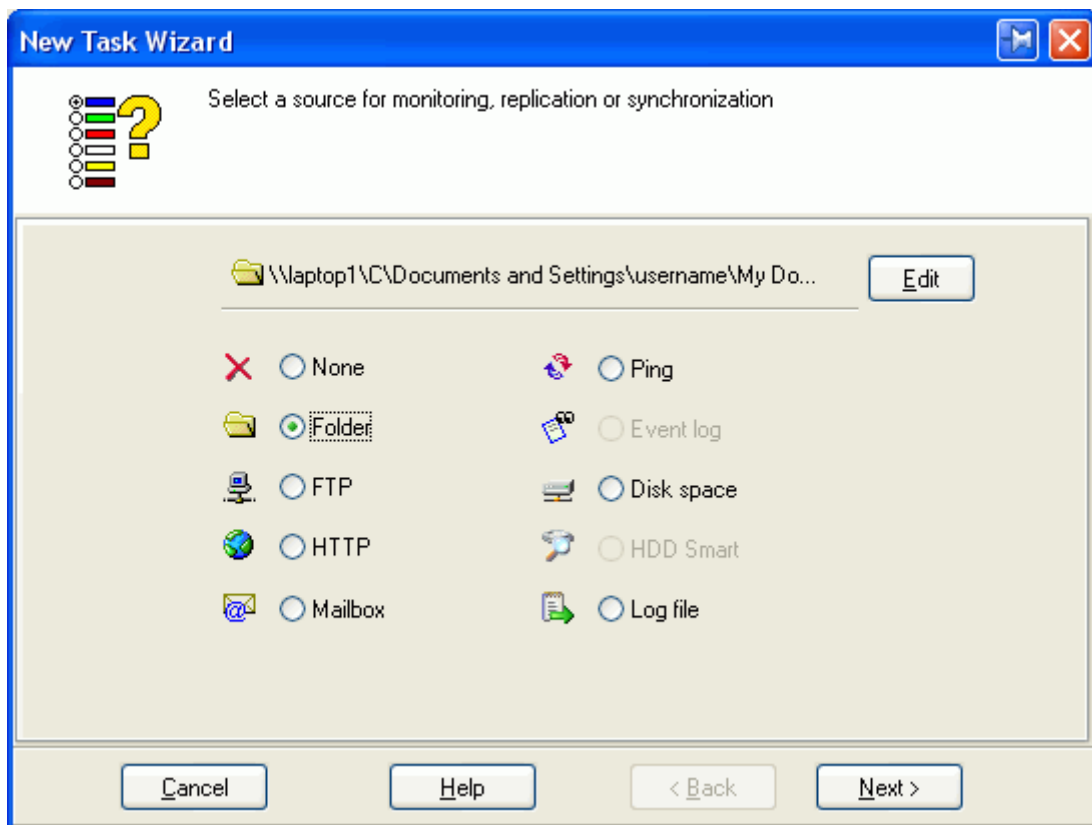
Remote Agent Extension

Extension supports data replication to/from computers those aren't connected to a network constantly (like laptop, tablet, UMPC computers, etc.). To use this extension the TCP/IP protocol have to be installed and enabled on a computer.

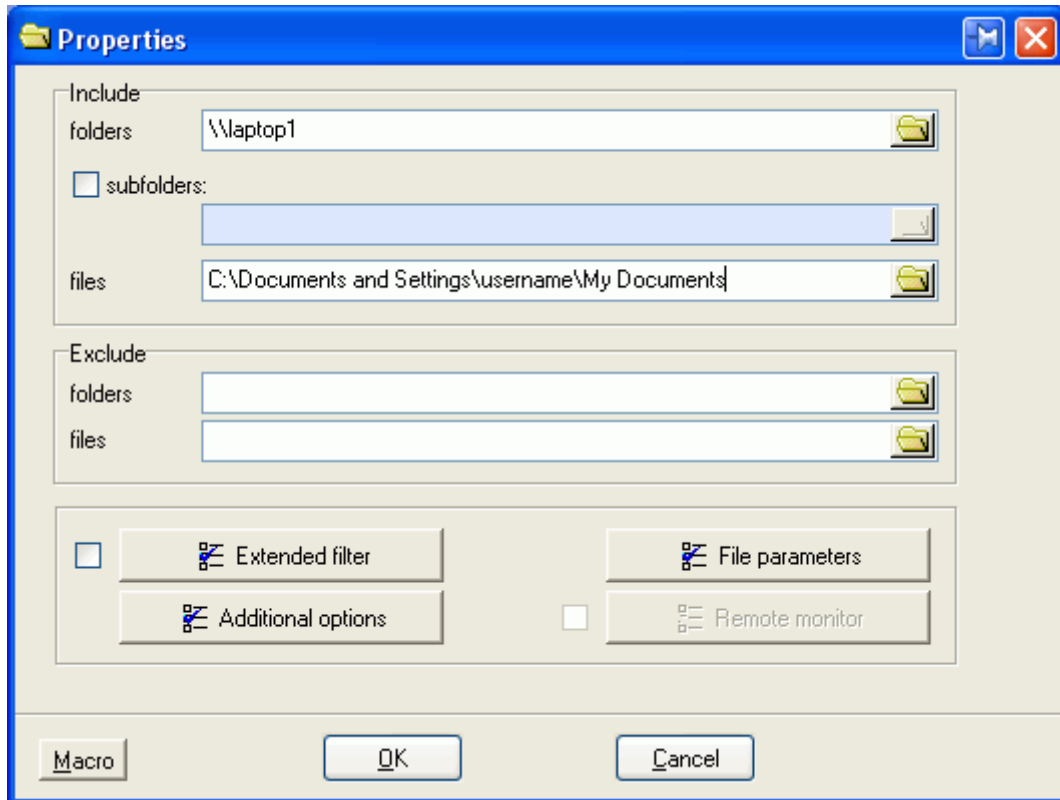
1. Make a new task.



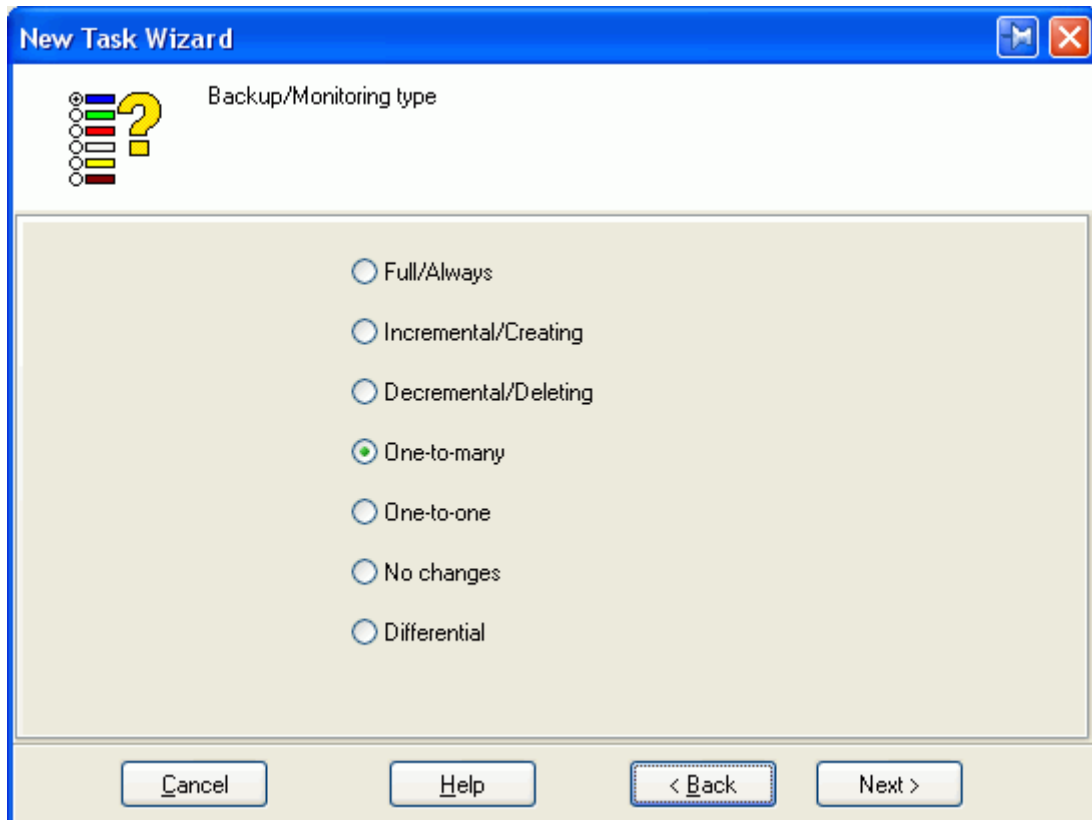
2. Select a Folder item in the Wizard window and press Next button.



3. Enter the remote computer name and the path to the files to be replicated and press OK button.



4. Select One-to-many (or other appropriate item) backup type and press Next button.



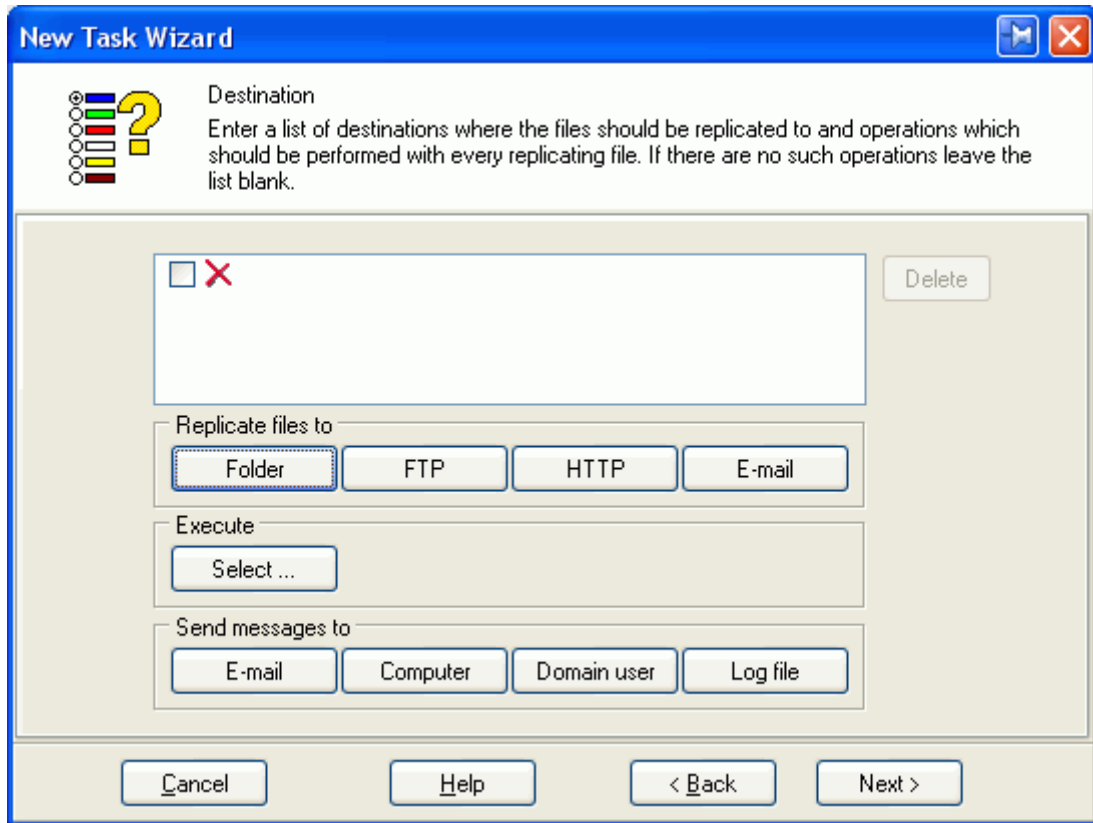
5. Select Copy file operation and press Next button



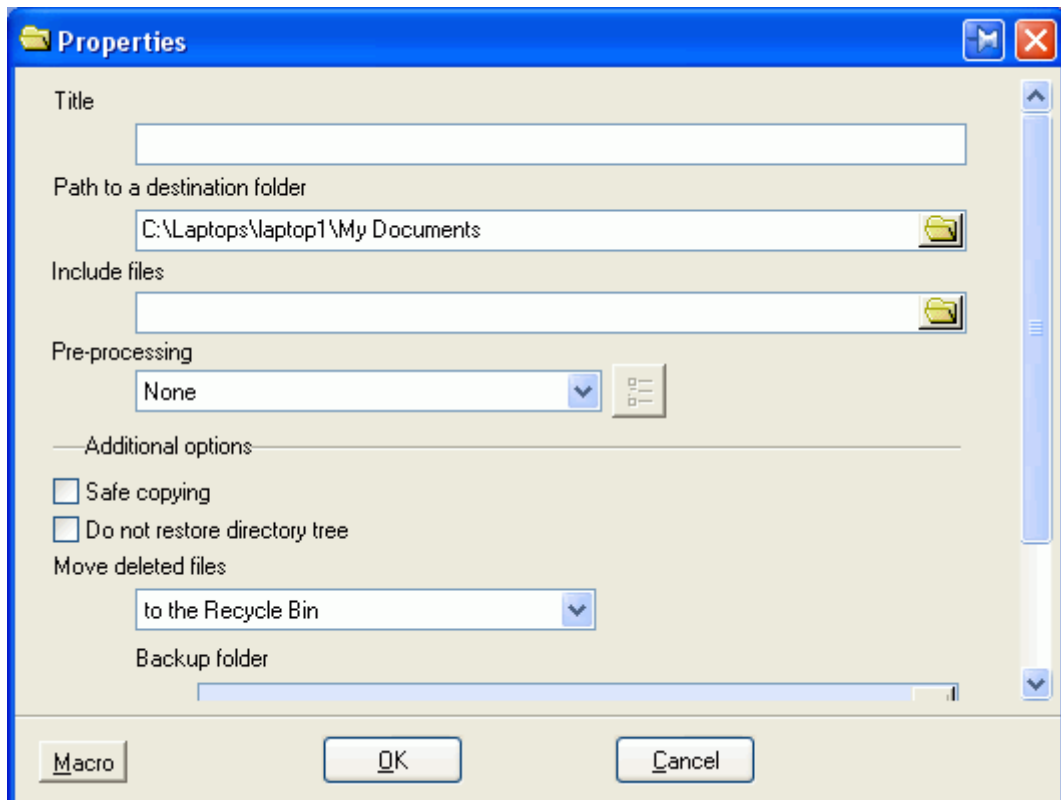
6. Select Always as a file replacement type and press Next button.



7. Press **Folder** button in the destination Wizard window.



8. Enter a path to the folder where the files should be replicated to.



9. Select Remote request in the Schedule type Wizard window and press Next button.



10. Enter the appropriate task name and press Finish button.



11. Open the Remote Agent extension item in the settings window of the Control center.

The extension has the following settings:

Activity - enables or disables the remote request receiving.

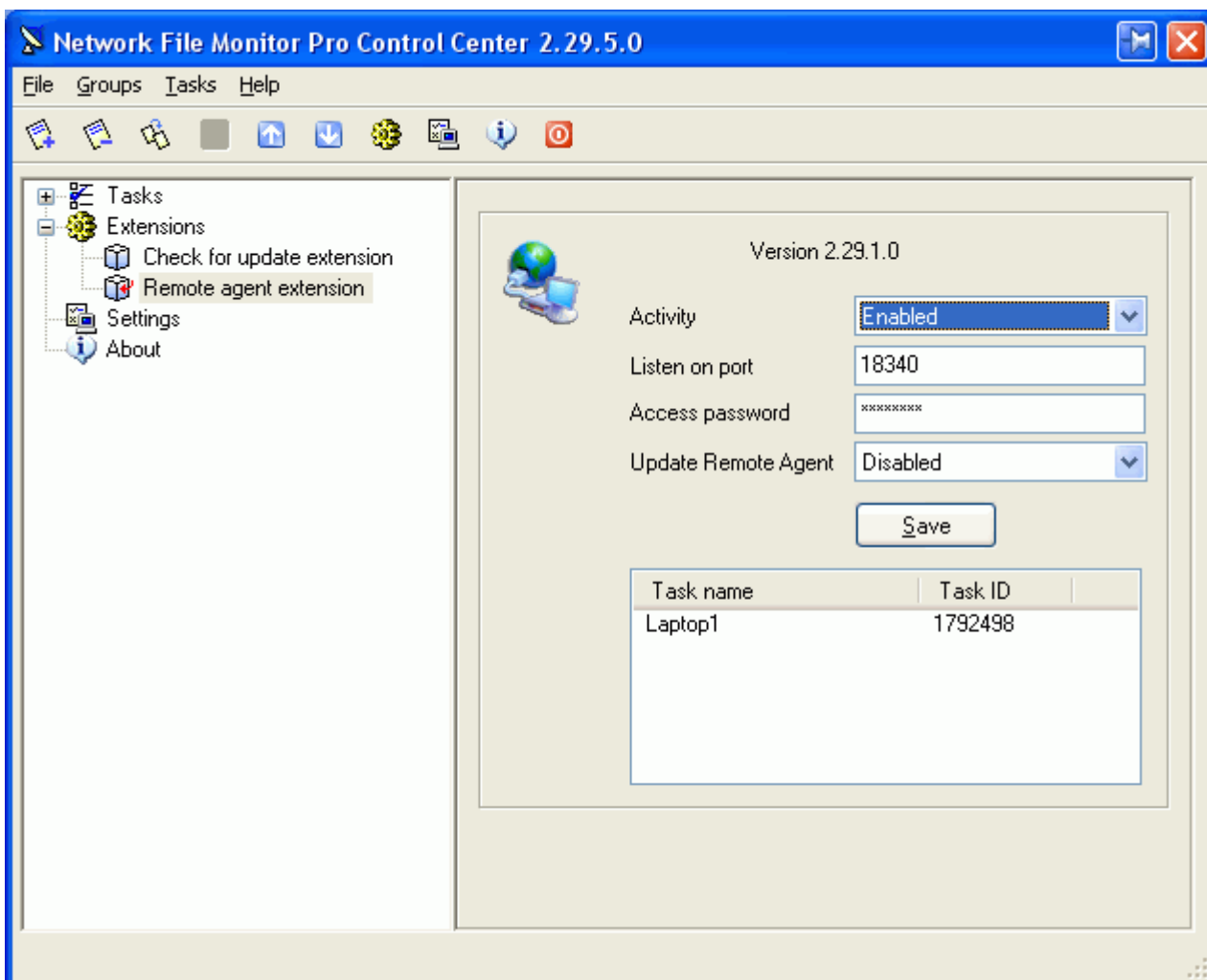
Listen on port - TCP/IP port where requests from a Remote Agent should be sent.

Access password - a password which a Remote Agent should sent to prevent an unauthorized access to the task.

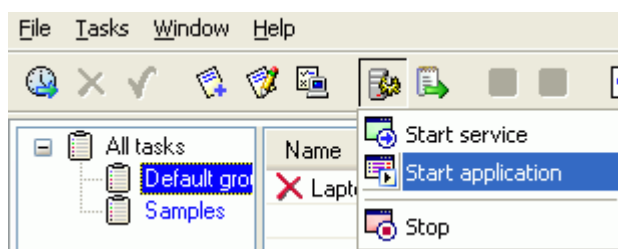
Save - to keeps the changed values.

TaskId - a reference to the task which a Remote Agent should sent to activate the replication. A list contains tasks where the "Remote request" schedule type is selected.

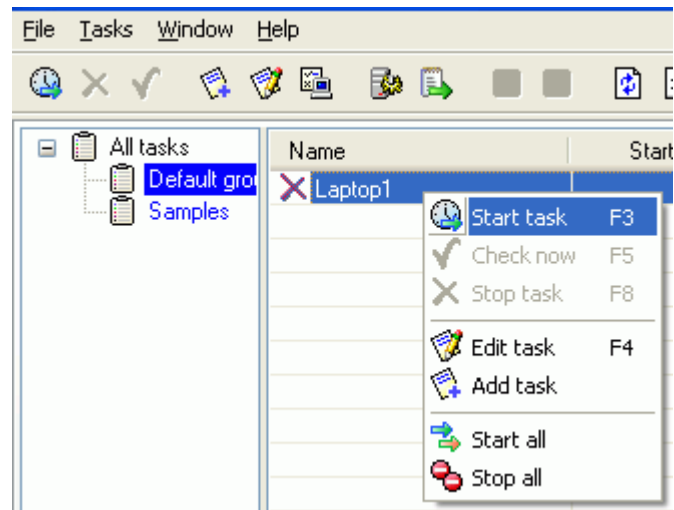
12. Enter the port number and access password which the Remote Agent should use to connect to the Remote Agent extension and save the settings.



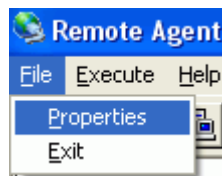
13. Start the server module.



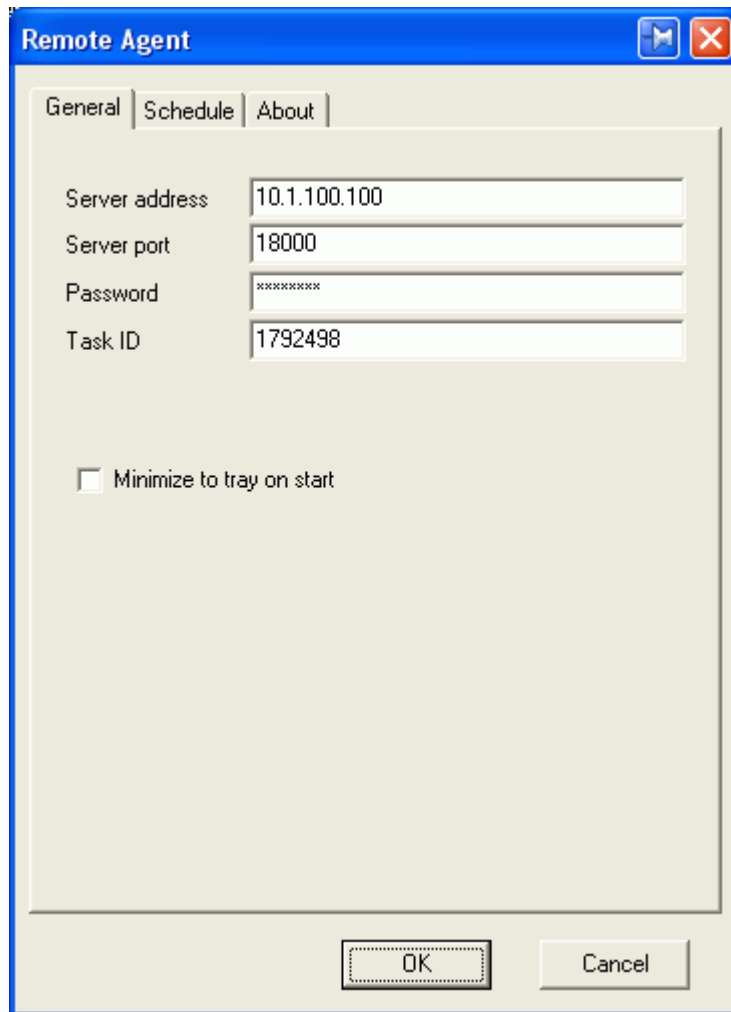
14. Start the task.



15. Install the Remote Agent (RA) on a remote computer. Open the RA Properties window.



16. Fill the General page. Take the values for the fields of Server port, Password and Task ID from the Remote Agent extension settings window (see [#Extension settings](#)).



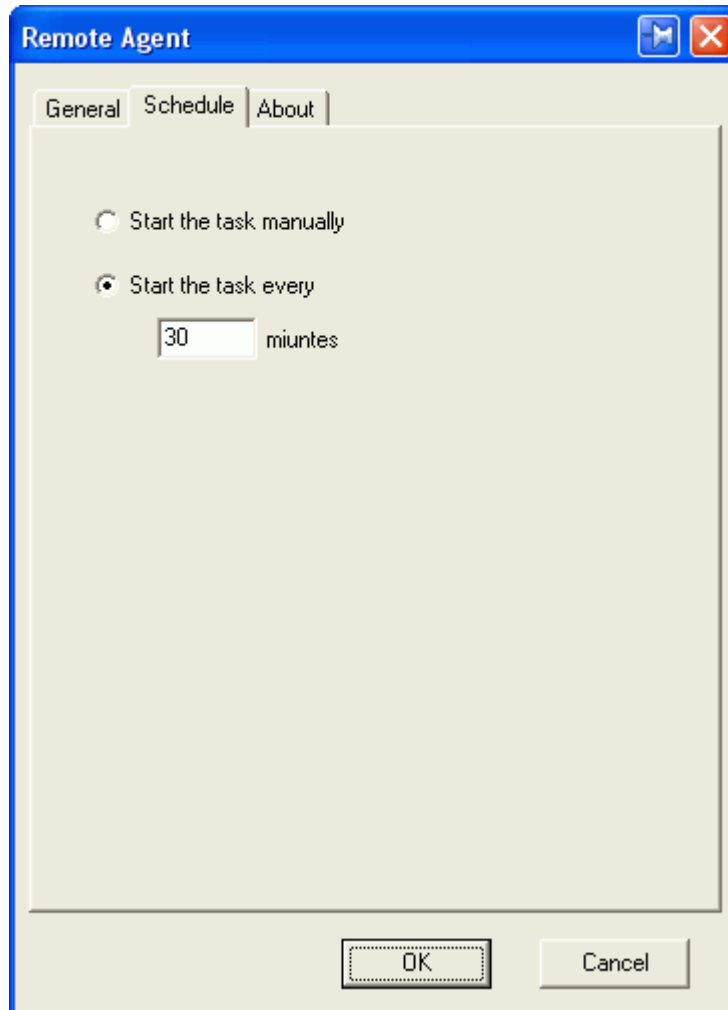
The image shows a Windows-style dialog box titled "Remote Agent". It has three tabs: "General", "Schedule", and "About". The "General" tab is selected. The dialog contains four text input fields: "Server address" with the value "10.1.100.100", "Server port" with "18000", "Password" with "*****", and "Task ID" with "1792498". Below these fields is a checkbox labeled "Minimize to tray on start" which is currently unchecked. At the bottom of the dialog are two buttons: "OK" and "Cancel".

| Field | Value |
|----------------|--------------|
| Server address | 10.1.100.100 |
| Server port | 18000 |
| Password | ***** |
| Task ID | 1792498 |

Minimize to tray on start

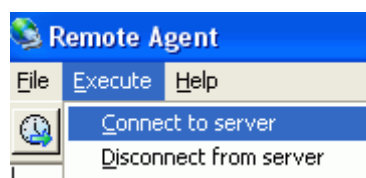
OK Cancel

17. Open the Schedule properties page. Select how the replication should start: manually from the main window or automatically. If the automatic type is selected enter the time (in minutes) between the replications.



To save properties press OK button.

18. Connect the remote computer to the network, start the Remote Agent and activate the replication task.



Remote Agent supports a set of command line options to automate its working. This allows to start it from a batch file or another application on a desired schedule. Following command line keys can be used:

AUTOSTART - Remote Agent will connect to a pacified server immediately after start.

CFGFILE <filename> - name of configuration file. Default name is "RA.dat".

NOEXIT - do not exit after disconnecting from Network File Monitor Pro server. This key can be used together with AUTOSTART.

All keys are case insensitive. The first character of a key must be / or - . The example of a command line:

```
RemoteAgent.exe /autostart /cfgfile RA1.dat
```